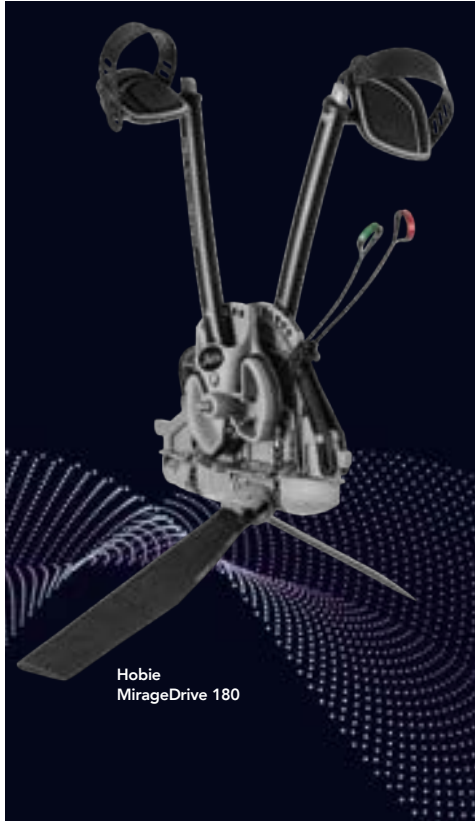


# MIRAGEDRIVE®



## PERFORMANCE FINS - ST TURBO!

Increase your performance or increase your fitness routine, you choose the fin that is right for you: Standard or Turbo... low or a higher gear! This is very evident when using a sailing kit. The added power and speed of the sail often outpaces the standard fins (similar to pedaling a bike down hill in first gear).

Want to go really fast? Add TURBOs. Hobie Mirage kayak users report as much as 10% increase in speed and more using TURBO Fins. But its not all about speed, you can get top end speed and a slower cadence for cruising (Less pedals per mile). All achieved with these larger and more efficient fin designs. These longer fins can also increase lateral resistance for sailing upwind.



MD 180 ST Turbo Fin Kit



ST Turbo Red Fin Kit

## MIRAGEDRIVE SPARE PARTS KITS GT & MD180

Spare parts kits include a fin, mast, sprocket (For GT Version), chain and appropriate parts for the drive version. Threaded sprockets and masts. All in a handy zippered pouch. Available for ST or ST Turbo fin drives.

## LEASH KIT - MIRAGEDRIVE

Protect your investment from an accidental drop overboard. Includes hardware for attachment to the hull.

## HOBIE MULTI-LUBE

A planet-safe lubricant recommended for lubricating MirageDrives and many other uses. Environmentally friendly for in-the-water applications. Hobie Multi-Lube offers excellent lubrication, is an anti corrosive coating, great for cleaning and many other uses... use on nearly anything that squeaks, rusts, corrodes or binds up; MirageDrives, rudder drums, cams, fishing reels and more. The 1 oz size is perfect for getting the lubricant into tight spaces by using the needle applicator. The 4 oz size has a spray applicator for coating chains and larger surfaces, shafts and bulky parts. Every Hobie owner should have Hobie Multi-Lube. Be nice to our planet, keep MirageDrives and other components running smoothly and lasting longer without polluting our waterways. Use it for all shop, home and sport lubrication needs.



Scan for Hobie  
Support Pages



Scan for Hobie  
Parts Look Up



MirageDrive Spare Parts Kits GT &amp; MD 180



Leash Kit - MirageDrive

- 5120 HOBIE MULTI LUBE 1 OZ
- 5121 HOBIE MULTI LUBE 4 OZ
- 72065 ST-TURBO FIN KIT - GRAY/BLACK
- 72066001 ST-TURBO FIN KIT V2/GT - GRAY/
- 72066021 ST-TURBO FIN KIT V2/GT - RED/B
- 72066031 ST-TURBO FIN KIT V2/GT - BLU/B
- 72067002 ST-TURBO V2 FIN KIT MD180 BK/G

- 72067032 TURBO FIN KIT - KICK UP
- 74052101 LEASH KIT - MIRAGEDRIVE
- 80010401 MIRAGE GT SPARE PARTS KIT
- 80013401 MIRAGE GTT SPARE PARTS KIT
- 81527021 MD180 ST PARTS KIT
- 81527022 MD180 ST TURBO PARTS KIT

FIND HOBIE MIRAGEDRIVE 180 DIGRAMS AT [HOBIE.COM/SUPPORT](http://HOBIE.COM/SUPPORT)

# MIRAGEDRIVE GT / V2

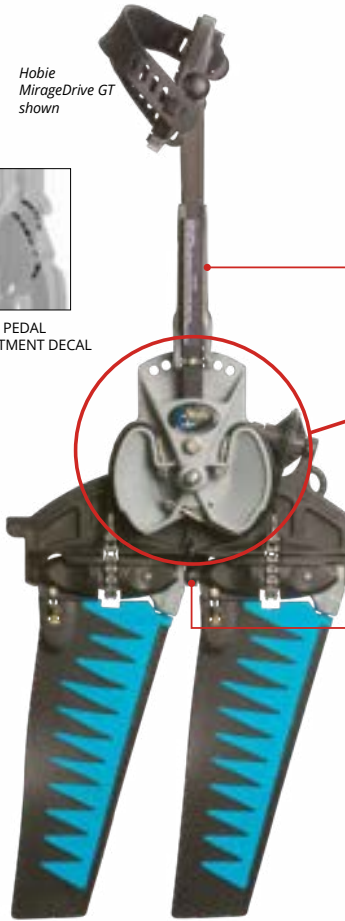
## TECH TIP

WHAT MAKES A GT Drive? V2 Drums, V2 Chains, GT Idler Pulley, V2 Idler Cable, GT sprockets and V2 (Threaded) masts

Hobie MirageDrive GT shown



81172 PEDAL ADJUSTMENT DECAL



- 81236002 PEDAL ADJ GRAY ASSY INCLUDES:  
 81240 PLASTIC HANDLE GRAY  
 81230 PIN  
 8031201 SCREW  
 81242 SPRING  
 8034071 ALLEN WRENCH

81181001 SPINE NEW 2013

81080001 SPROCKET SHAFT

53170020 SET SCREW

COMFORT FIN ST FIN ST TURBO FIN



81190001

81193001 (GRY/BLK)

81193021 (RED/BLK)

81193 (BLU/BLK)

81192 (GRY/BLK)

81192021 (RED/BLK)

81194 (BLU/BLK)

- 81222 PEDAL/CRANK ASSY. GRY (R)  
 81221 PEDAL/CRANK ASSY. GRY (L)  
 81222011 PEDAL ONLY (R)  
 81221011 PEDAL ONLY (L)  
 81226001 PEDAL STRAP (R)  
 81227001 PEDAL STRAP (L)  
 81222101 CAP - PEDAL CRANK  
 81222111 CAP - PEDAL  
 8050110 NUT  
 8080541 WASHER

- 81055 SPROCKET GUARD FWD  
 8031450 SCREW

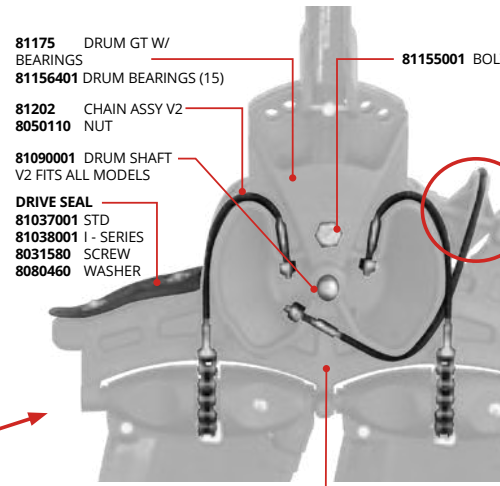
- 81050001 OUTHAUL BLOCK  
 8020040 CLEVIS PIN  
 10860000 LOCK RING

- 81127001 SPROCKET GT THREADED (W/ BEARINGS AND FWD GUARD)  
 81156301 SPROCKET BEARINGS (12)

- 81163 MAST V2 THREADED  
 81198 MAST / ST TURBO V2 THREADED  
 8000341 LOC-TITE .5ML

**UPDATE KIT - GT SPROCKET**  
 (2 GT SPROCKETS AND 2 V2 MASTS)  
 81129023 GT STANDARD MAST KIT  
 81129123 GT TURBO MAST KIT

**UPDATE KIT - V1 DRUMS/CABLES TO GT**  
 (2 GT DRUMS, V2 CHAINS, GT IDLER PULLEY, V2 IDLER CABLE AND NUTS)  
 81171002 DRUM UPDATE KIT V1 TO GT

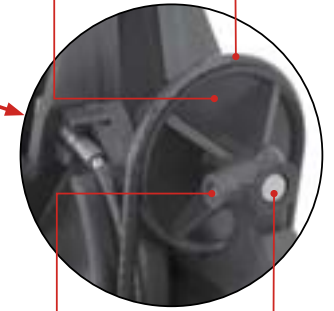


- 81175 DRUM GT W/ BEARINGS  
 81156401 DRUM BEARINGS (15)  
 81202 CHAIN ASSY V2  
 8050110 NUT  
 81090001 DRUM SHAFT V2 FITS ALL MODELS  
**DRIVE SEAL**  
 81037001 STD  
 81038001 I - SERIES  
 8031580 SCREW  
 8080460 WASHER

81095 DRIVE ALIGNMENT PIN 2012+

## HOBIE MIRAGEDRIVE "V2" / "GT"

- 81123 IDLER PULLEY GT W/ BEARINGS  
 81156201 IDLER BEARINGS (12)  
 81203 IDLER CABLE V2 (17.2")  
 8050110 NUT

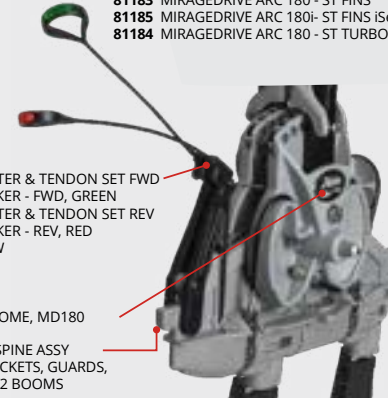


53170020 SET SCREW

81110001 PULLEY SHAFT

## HOBIE MIRAGEDRIVE 180

- 81183 MIRAGEDRIVE ARC 180 - ST FINS  
 81185 MIRAGEDRIVE ARC 180i - ST FINS iSeries  
 81184 MIRAGEDRIVE ARC 180 - ST TURBO FINS



- 81486021 SHIFTER & TENDON SET FWD  
 810008 STICKER - FWD, GREEN  
 81491021 SHIFTER & TENDON SET REV  
 810009 STICKER - REV, RED  
 8031190 SCREW

72545 DECAL DOME, MD180

81499 MD 180 SPINE ASSY INCLUDES SPROCKETS, GUARDS, SHIFTERS AND V2 BOOMS

- 81503002 BOOM MD 180 V2  
 96610010 ROLL PIN  
 8020030 CLEVIS PIN  
 81503100 RING

- 81528002 MAST MD180 V2 STANDARD  
 81500 MD180 FIN V2 STD  
 81529002 MAST MD180 V2 TURBO  
 81502 MD180 FIN V2 TURBO

## TECH TIP

**MAINTENANCE AND TUNING** - Maintenance and tuning information for MirageDrives is available on the Hobie Cat website support area. Click the kayak model name then see Care and Maintenance. Direct link to the support pages for kayaks is here: <http://www.hobie.com/support/>

## HOBIE MIRAGEDRIVE -OLDER-

Original drive with aluminum spine, stainless sprocket / mast connection is cotter key. Limited parts available.

- 81130001 SPROCKET (STAINLESS)  
 8060110 COTTER KEY (MAST / SS SPKT)  
 8020060 CLEVIS PIN  
 10860000 LOCK RING  
 81211001 IDLER CABLE 14 3/4" (SOLID PULLEY)

## MIRAGEDRIVE SPARE PARTS KITS

Spare parts kits include a fin, mast, sprocket, chain and appropriate parts for the drive version. Older drives have sprockets and masts that use a set screw connection. V2 drives use threaded sprockets and masts. All in a handy zippered pouch. Don't waste a day on the water when your MirageDrive could be easily repaired. Available for the standard fin drive or a drive with the ST Turbo fins. Standard kit shown.

- MIRAGEDRIVE GT (THREADED MAST)**  
 80010401 GT ST (Bearing Sprocket)  
 80013401 GT TURBO (Bearing Sprocket)